

Jodi Josephs

083 301 0404

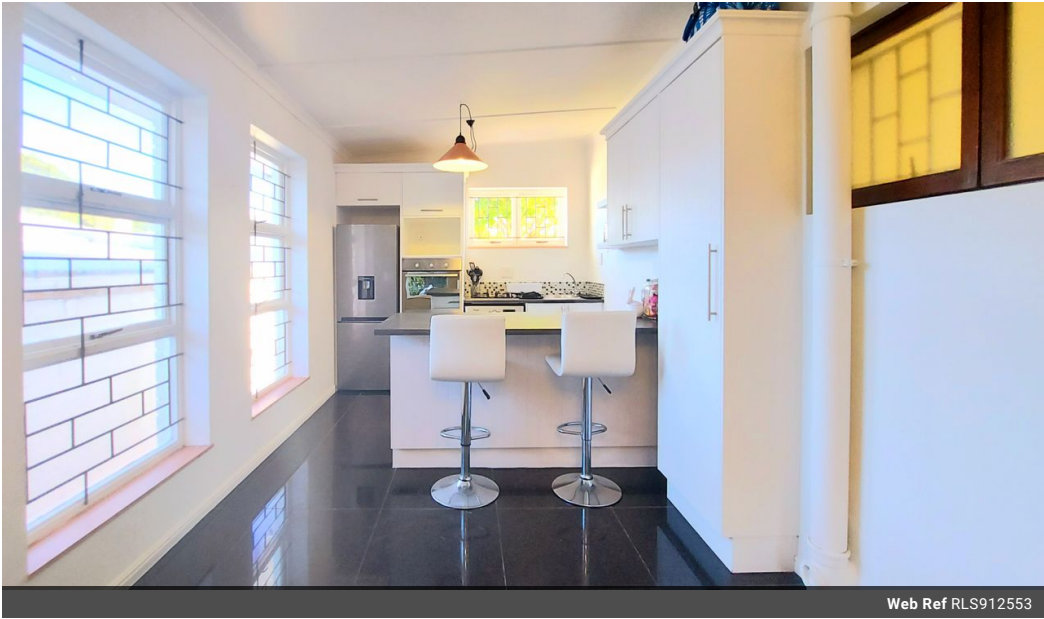
jodi.josephs@seeff.com

Contact Hermanus

028 3130390

Shop 10
104 Main Road
Hermanus
7200

1 Bedroom Garden Cottage To Let in Onrus



R9,250 pm

Lease Period 12 months Availability Immediately Deposit -
Annual Escalation -

 1  1  1

Cosy Garden Flatlet in the Heart of Onrus

This charming garden flatlet is ideally located in Onrus, within easy reach of local amenities. Featuring modern finishes, a private entrance, and a fully walled garden, it offers both comfort and privacy.

Ideal for a single, mature individual with sober habits, the flatlet includes:

- 1 bedroom with built-in cupboards
- Ensuite bathroom with shower and bath
- Open-plan lounge and kitchen with gas stove, and fridge
- Garage providing secure off-street parking
- Water and electricity included

Details:
Available from 1 December 2025

Features

Interior		Exterior	
Bedrooms	1	Garages	1
Bathrooms	1	Security	No
Kitchens	1	Pool	No
Recep. Rooms	2	Views	False
Furnished	No		