

Tanya Spann
0723218777
tanya.spann@seeff.com

Lizelle Oosthuizen
0836588054
lizelle.oosthuizen@seeff.com

Contact Hermanus
028 3130390

Shop 10
104 Main Road
Hermanus
7200

On Show

🕒 11:00 to 13:00

📅 Sunday, 02 November 2025

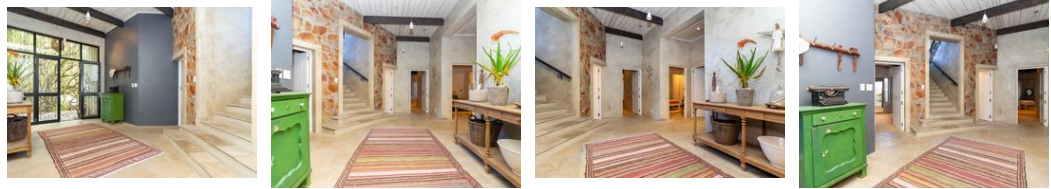
Directions

16 Nico van der Merwe Street, Sandbaai
Phone agent for directions



ON SHOW

Web Ref RLS990663



R9,950,000

🛏️ 4 🚿 3.5

Monthly Bond Repayment R99,338.80

Calculated over 20 years at 10.5% with no deposit.

Transfer Costs R975,414.00 **Bond Costs** R84,785.00

These calculations are only a guide. Please ask your conveyancer for exact calculations.

Monthly Rates R1,107

Beautiful Family or Holiday Home with Mountain & Sea Views in Sandbaai

JOINT MANDATE

Nestled on the western side of Sandbaai, this spacious home offers breathtaking mountain and sea views, all just a short stroll from Sandbaai Beach and Onrus Beach. Surrounded by the charm of milkwood trees on your erf, this property combines natural beauty with modern living.

Key Features:

- 4 well-sized bedrooms (all on the ground floor)
- 3.5 bathrooms
- Open-plan living, dining, and kitchen area filled with natural light from large windows
- Indoor fireplace for cozy evenings
- Built-in braai on the covered stoep with stunning views
- Rooftop balcony floor with panoramic vistas of the ocean and...

Features

Pets Allowed Yes

Interior

Bedrooms	4
Bathrooms	3.5
Kitchens	1
Recep. Rooms	3
Furnished	No

Exterior

Carports / Parkings	4
Security	Yes
Pool	No
Views	True

Sizes

Floor Size	400m ²
Land Size	844m ²

Extras

24 Hour Response Built In Braai Centre Island Alarm System Covered Patio Double Storey Freestanding Fireplace Garden Holiday Home Mountain Mountain View Walk In Closet Secondfloorandabove Open Plan

